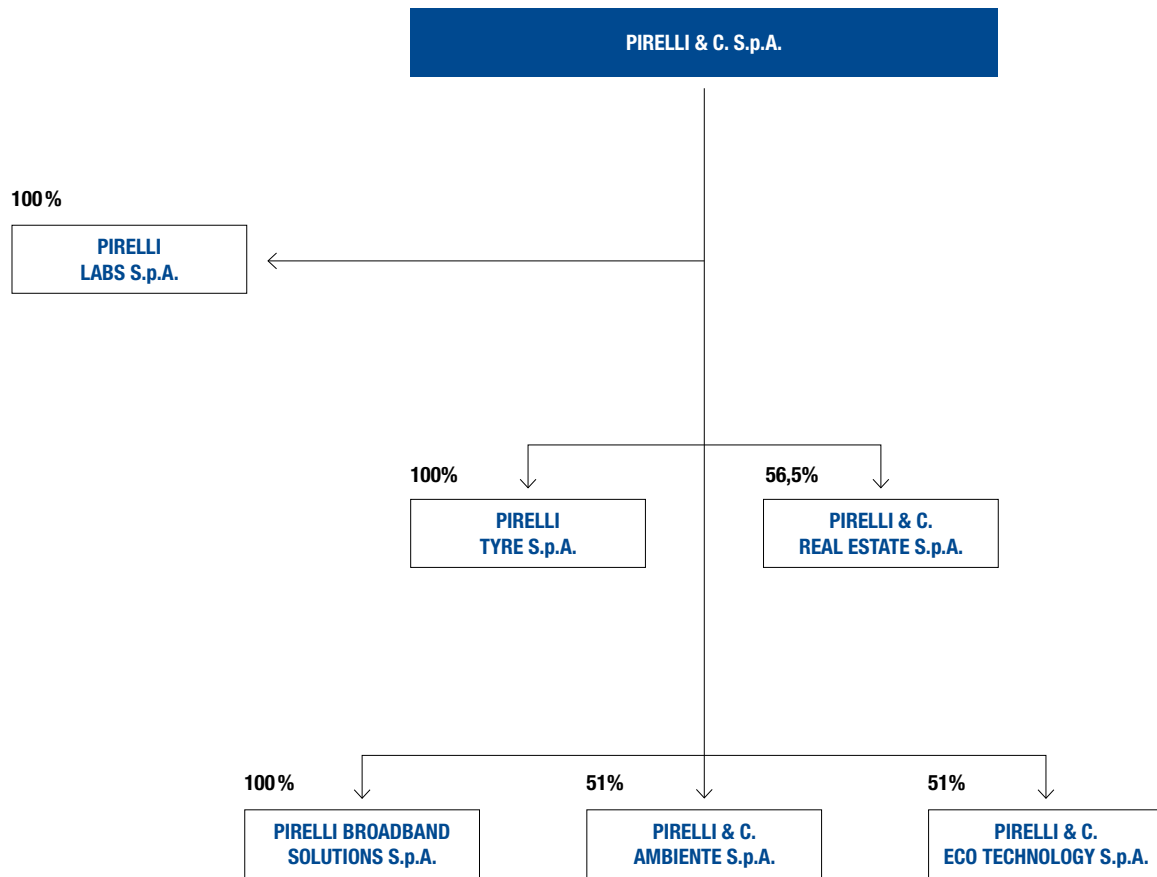


Structure of Pirelli Group at December 31, 2008



MARKET TRADING ON THE MILAN STOCK EXCHANGE

	Shares traded volume	Amount (in Euros)
Pirelli & C. S.p.A. - ordinary shares	7.869.785.649	3.754.089.026
Pirelli & C. S.p.A. - saving shares	79.065.631	39.708.121

NUMBER OF SHARES OUTSTANDING

	at December 31, 2008	at March 9, 2009
Pirelli & C. S.p.A. - ordinary shares	5.233.142.003	5.233.142.003
Pirelli & C. S.p.A. - saving shares	134.764.429	134.764.429