

# PIRELLI - Fact Sheet 1H'09

## Contacts

**Pirelli & C S.p.A**  
Viale Sarca, 222  
20126 Milano  
Tel: +39 02 64421  
Fax: +39 02 6442444  
[www.pirelli.com](http://www.pirelli.com)

**Share Capital**  
€1,516,269  
Total ordinary share  
5.233,142,003  
Total savings shares  
134,764,429  
Nominal value: €0.29

## INVESTOR RELATIONS

**Valeria Leone**  
Mob. +39 335 6335111  
Tel. +39 02 6442 2524  
[valeria.leone@pirelli.com](mailto:valeria.leone@pirelli.com)

## PRESS OFFICE

Tel: +39 02 6442 4270  
Fax: +39 02 6442 4451  
[pressoffice@pirelli.com](mailto:pressoffice@pirelli.com)

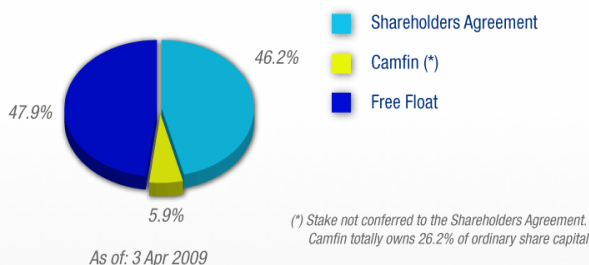
## AUDITING COMPANY

Reconta Enest & Young

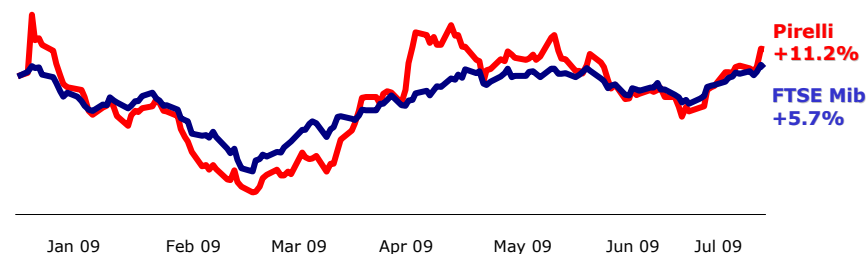
## Company profile

**Pirelli & C** is a limited company, listed on the Milan Stock Exchange since 1922. Tyres represent the strategic asset of the group with **Pirelli Tyre** that ranks as the fifth world player in terms of revenues. **Pirelli RE** is the leader in the Italian Real Estate sector and, at European level, is one of the main players. The Group is active in other high technological innovation sectors, such as broadband access and photonics. **Pirelli Eco Technology** is active in a wide range of latest generation Feelpure antiparticulate filters. **Pirelli Labs**, a centre of technological excellence, is at the service of all these businesses, and represents the engine of innovation for all the businesses of the Group.

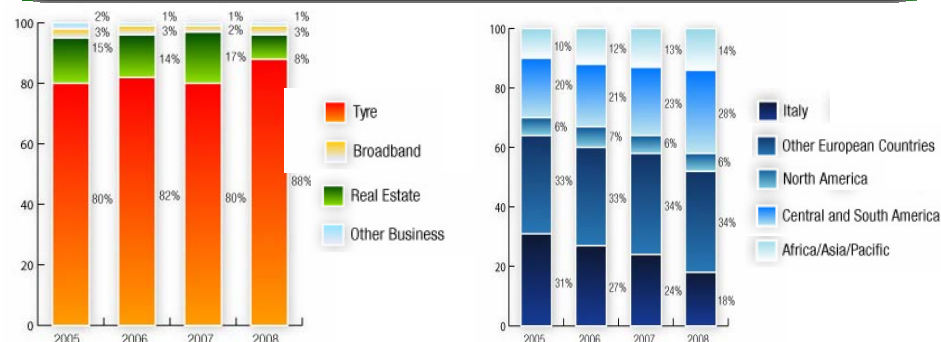
## Shareholders



## Market price trend (2 Jan. – 31 Jul. '09)



## Sales by business and geographical areas



## Corporate Governance

### BOARD OF DIRECTORS

Chairman: M. Tronchetti Provera  
Deputy Chairman: A. Pirelli  
Deputy Chairman: C.A. Puri Negri  
Directors: C. Acutis, C. Angelici, C. Antonelli, G. Benetton, A. Bombassei, F. Bruni, L. Campiglio, E.T. Cucchiani, B. Libonati, G.M. Ligresti, M. Moratti, R. Pagliaro, U. Paolucci, G. Perissinotto, G. Pesenti, L. Roth, C. Secchi

### BOARD OF STATUTORY AUDITORS

E. Laghi (chairman)  
P. Gualtieri  
F. Ghiringhelli  
P.D. Sfameni  
L. Guerra

### GENERAL MANAGER

C. De Conto

### TOP MANAGEMENT

**M. Tronchetti Provera**  
Chairman  
**A. Pirelli**  
Deputy Chairman  
**C.A. Puri Negri**  
Deputy Chairman  
**C. De Conto**  
General Manager and Chief Operating Officer  
**F. Gori**  
CEO and Managing Director Pirelli Tyre

### REMUNERATION COMMITTEE

B. Libonati (Chairman)  
A. Bombassei  
G. Pesenti

## Financial Data as of 30.06.09

(€ million)	1H 09		1H 08	
		yoy	Pro forma*	1H 08
Net sales	2,138	-13%	2,460	2,685
Gross operating profit	226	-26%	306	317
% on sales	10.6%	-1.9pp	12.4%	11.8%
Operating profit before restructuring expenses	122	-39%	202	212
% on net sales	5.7%	-2.5pp	8.2%	7.9%
Restructuring expenses	(21)	0%	-21.2	(21)
Operating profit	101	-44%	181	190
% in sales	4.7%	-2.6pp	7.4%	7.1%
Result from Equity Participations	-29	n.s.	(92)	-92
Op. profit including Result from Equity Participations	73	n.s.	86	98
Financial Income/Charges	(39)	n.s.	(23)	(27)
Tax Charges	(46)	n.s.	(63)	(69)
Net Income	(12)	n.s.	(10)	(10)
Net Income post minorities	6	n.s.	(36)	(36)
Employees (number at period end)	29525	-6%	31368	31368
Factories	23	-1	24	24

\* Pirelli Re Facility Management in discontinued operations